

PLAN FOR EMERGENCY

**DEAN ANDERSON, B.SC., P.AG.
STRATEGIC ADVISOR, AGRICULTURE
DEAN.ANDERSON@WSPS.CA**

Our Customers

- 168,000+ workplaces
 - 4.0 million employees
- Sectors:
 - Agriculture
 - Manufacturing
 - Services
- +90% small businesses



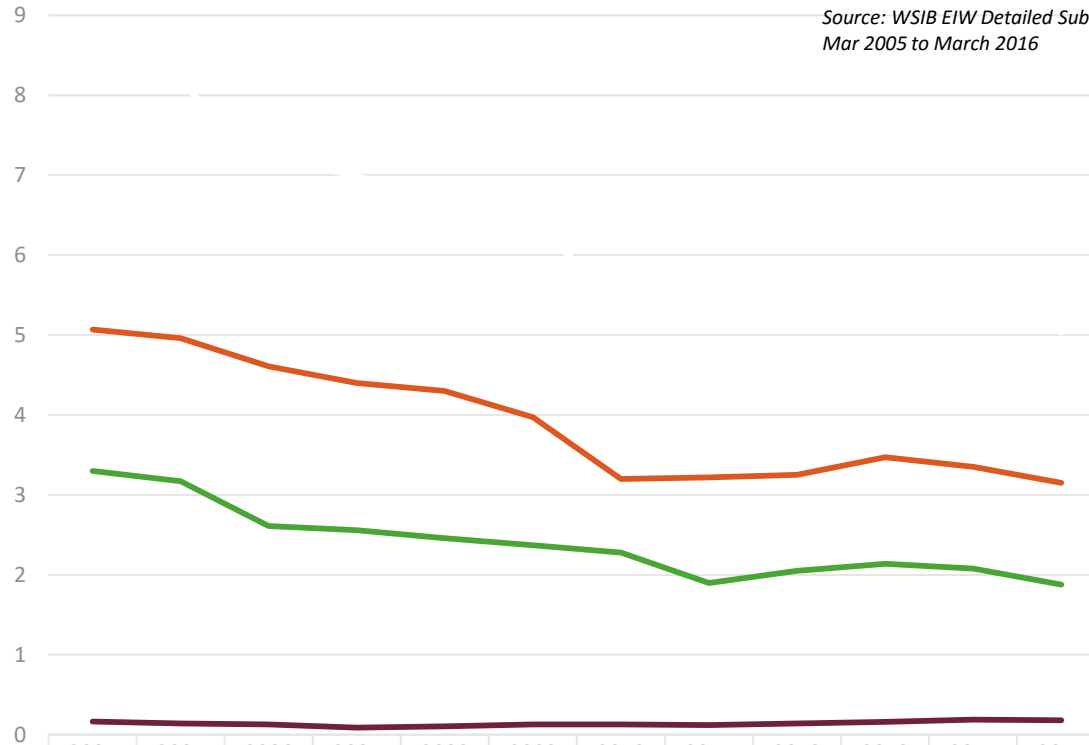
Workplace Safety & Prevention Services

- Health and safety provider for
 - Livestock Farms
 - Field Crop, Fruit and Vegetable Farms
 - Tobacco and Mushroom Farms
 - Fishing and Miscellaneous Farming
 - Poultry Farms and Agricultural Services
 - Landscaping and Related Services
 - Manufacturing
 - Hospitality and Tourism
 - Retail and Other Services

Agriculture Injury Trends (WSIB)

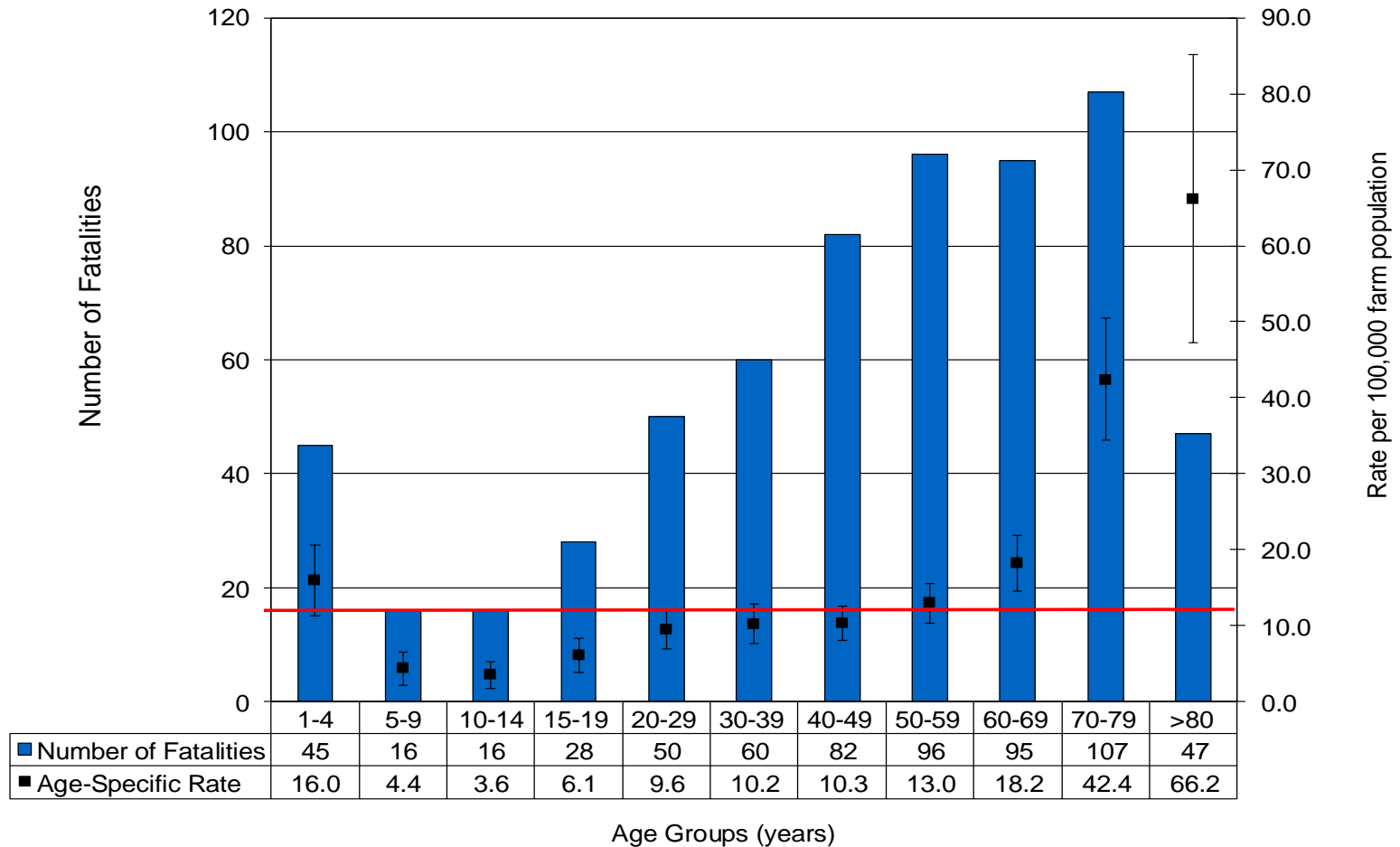
Agriculture Injury Rates

Source: WSIB EIW Detailed Sub-Sector Reports
Mar 2005 to March 2016

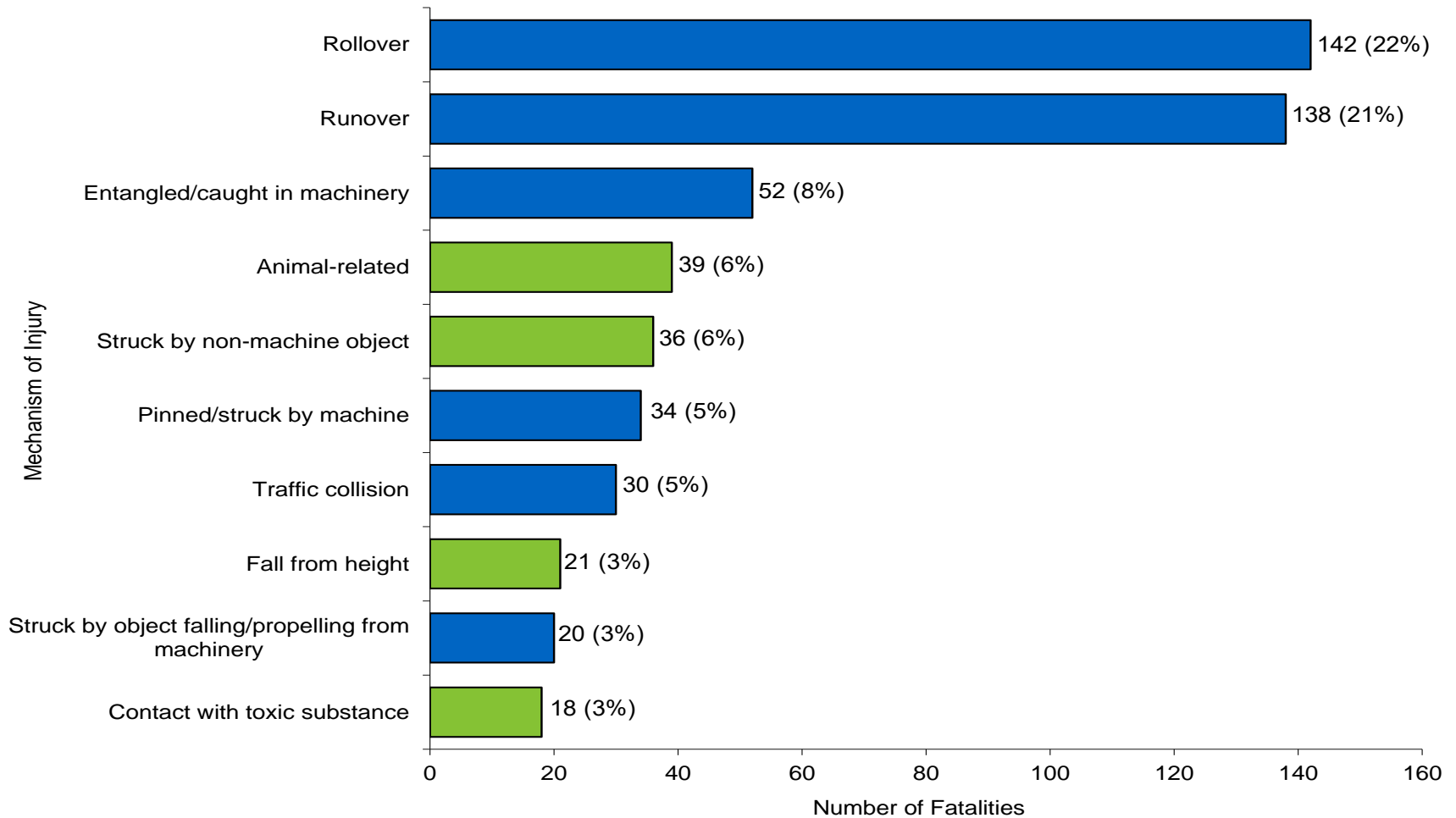


	2004	2005	2006	2007	2008	2009	2010	2011	2012	2013	2014	2015
Total Injury Rate	8.38	8.14	7.23	6.98	6.77	6.35	5.49	5.13	5.30	5.60	5.43	5.03
No Lost Time Injury Rate	5.07	4.96	4.61	4.40	4.30	3.97	3.20	3.22	3.25	3.47	3.35	3.15
Lost Time Injury Rate	3.30	3.17	2.61	2.56	2.46	2.37	2.28	1.90	2.05	2.14	2.08	1.88
Critical Injury Rate	0.17	0.14	0.13	0.09	0.10	0.13	0.13	0.12	0.14	0.16	0.19	0.18

Agriculture-related fatalities by number and rate by age group, 1990-2012



Agriculture-related fatalities by top 10 causes



Changing Nature of the Sector in Ontario

- Number of farms declined 26% (2001-2011)
- Farms getting larger
- Average farmer operator age increased to 54 years
- Same number of agriculture workers on fewer large farms - shift to employees from operators
- 20% of agriculture workers are foreign temporary
- Less farms reporting any hired employees (32%)
- Increasing mechanisation to increase productivity and efficiency – changing nature of work

What will it cost the business?

- Farm business management is strategic – maximize productivity (profit) by managing input costs.
- Do you take into consideration the economic burden that could be created by a workplace injury or illness? They don't just happen : the majority of workplace injuries and illnesses are predictable and preventable.
- How easy is it to recover economically from loss?

What does an injury cost?

- A 2004 Queen's University study indicates that the economic burden to a farm's economy for a non hospitalized injury
- A worker strains his back and is laid up for a couple of days. Approximately \$700.
- Your farm's principle decision maker breaks arm in two places. Approximately \$10,000.
- Business owner becomes a quadriplegic! A Permanent disability is \$143,000.

What happens when the owner dies?

- The 2004 Queen's University study indicates that the economic burden to a farm's economy for a fatal injury is \$275,000.
- A 2015 US report estimated the mean cost of a tractor roll over at \$1,000,000. with all costs considered: lost wages and farm income, lost productivity, loss of machinery, emotional stress (witnesses, owner, worker), hiring replacement costs.

Emergency Preparedness

- A fast, co-ordinated response in an emergency can lessen the impact of an injury and may even save a life. Several organizations offer emergency response and first aid courses as a public service or for a fee. Contact your regional health office or your local fire department to find out about courses in your area.
- Basic Components of an Emergency Preparedness Plan
 - List possible emergency situations: Identify any emergencies that could occur, such as a chemical spill, machinery or livestock injury, someone collapsed in a confined space, bad weather, fire, explosion, etc.

Plan for Action

- Write out a plan for each potential incident, clearly noting the role of each person.
 - Because injured workers won't be able to do their part, make sure everyone knows what the process is and that they can step in to take over any of several roles in the plan.
 - For example: Make sure everyone knows how to shut off machinery and how to drive a vehicle. Make sure everyone knows the address or location of the farm and the best access routes. Plan possible ways to evacuate a person who may be difficult to reach, for instance in muddy fields, a bio-security area, a chemically contaminated area or a pen with aggressive livestock.

Identify Resources

- List everything needed to deal with possible emergencies in all areas of the farm.
 - for instance the location of fire extinguishers and neutralizers for chemical spills.
 - Have adequate first aid supplies and restock them periodically in all work locations and field vehicles.
 - Provide a foolproof way to call for emergency help.
 - Have more than one worker trained in basic first aid and CPR, and make sure others know who has the training.

Create a Communication System

- When people are working alone or in isolated spots, two-way radios or cell phones are a good idea.
 - Check in with each other regularly or go and physically check the worksite out at regular intervals throughout the day.
 - Create a working alone plan and follow it.

Information to Include in Your Plan

- List of people trained with current certification (include certification expiry dates)
 - First aid CPR
 - Spill response
 - Fire suppression
 - Livestock evacuation
 - Back-up power generator
 - Etc
- Key on-farm contact to report emergencies
- Local / regional emergency contact numbers
- Posted land location descriptions that EMS will understand

Information to Include in Your Plan

- Location of on site emergency resources
 - Telephone
 - Radio
 - First aid
 - Fire suppression
 - Spill response
 - Work / home contact information
- Responsibility for informing visitors / contractors of procedures upon arrival
- Farm site map locating
 - Structures / contents
 - Fuel storage
 - Water sources
 - On site hazards

Posting

POST BY ALL PHONES and IN FARM VEHICLES and MACHINERY

Emergency Contact Numbers

911: _____ Yes _____ No

Farm Name: _____ Phone: _____

Municipal Emergency Locator Number: _____

Legal Land Description: _____

Municipality/County: _____

Directions to this location: _____

Poison Centre: 1-800-____ - ____

Spills: 1-800-____ - ____

Fire Department	Police
Ambulance	Family Doctor
Hospital	Veterinarian
Electrical/Natural Gas/Propane	Telephone
Municipal/County Office	Emergency Measures Office

You called 911 now what?

Main role is now to be prepared for emergency services and if there is a victim keep them stable

- First priority is to protect yourself
- If more than one person....
- Make sure no one else can be hurt or the situation can't get worse (turn off power, move livestock if safe, move equipment that is in the way).
- Delegate/allocate someone to be at the road to help direct EMS Have someone support with first aid (to the level of their training) the role is to keep the injured person(s) as stable until professionals can take over.

- If there is snow make sure pond and building access is possible.
- If is in a field and I try to make it obvious where the assistance is needed
- Who ever calls 911 stay on the phone..
- Number one make sure you do what you can so the situation does not get worst.

How Can WSPS Help?

- Noise Surveys
- Exposure Assessments
- Indoor Air Quality Assessments
- Hazardous Atmospheres
- Respirator Fit Testing (qualitative)
- Policy/Program Review
- Training
- Team of Leading Professionals: Account Managers, Consultants, Technical Specialists and more

WSPS Health & Safety Solutions

- **A network of dedicated health and safety experts** who understand your industry and the unique challenges and hazards that you face in your business
- **Sector-specific training** materials and information
- A variety of **products and resources** that you can use to build health and safety into your operation
- Information related to a variety of **hazard topics**
- **ASWP Manual is available as a free download**
- **Conferences and events**
- Online newsletters and magazines including **Network News: Agriculture Industrial Sector**
- **Closing the Loop**
- **<http://wspss.ca/farmsafety>**

For all your health and safety solutions, contact:

Workplace Safety & Prevention Services

1 877 494 WSPS (9777)

www.wsps.ca/farmsafety

CONNECT
WITH US

